

GTC - Building Structural Containers

Unlimited Efficient affordable Solutions

* Gtc offer a full line from **2,4x6** and **3x7** m containers , each available in **15** different versions.

* 2,4 x 6,0 x 2,60 (lxwxh ; outside dimensions)

* 3,0 x 7,0 x 2,60

* All containers can be connected with each other :

*

unlimited

* Lenght

* Widht

* up to 3 stages Height

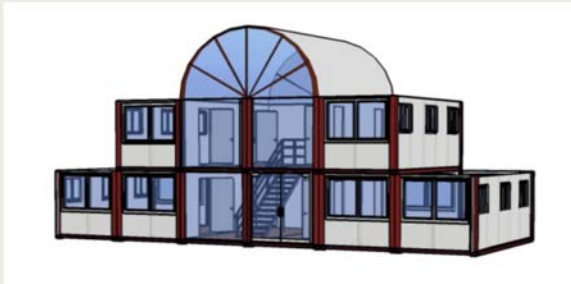
* Colour : standard Blue but all available

* Unlimited different assemblies , following demand

* Standard made in Flatpack for easy transport (10pieces-6m / 8 pieces-7m in 40feetHq)

* all steel heavy galvanised for long life

* easy mountable with crane eyes



- offices**
- sleeping dormitories**
- housing**
- building storage**
- gardenhouse**
- garage**
- toilets**
- storage**
- schools**



Call or Mail us for any information



10 x Flatpack



Technical Data Modular assembled Containers ,

| | |
|---|---|
| Snow Load | 80 kg/m ² TS 498 ve |
| Wind Speed | 102 km/saat (50 Kg/ m ²) |
| External Wall Heat Transmission Coefficient | K: 0,61 Kcal/m ² hC (K:0,71 |
| Internal Wall Heat Transmission Coefficient | K: 0,58 Kcal/m ² hC (K:0,67 |
| Roof Heat Transmission Coefficient | K: 0,39 Kcal/m ² hC (K:0,46 |
| Floor Heat Transmission Coefficient | K: 3,45 Kcal/m ² hC (K:4,01 |
| Base-Plate(chassis) Load Capacity | 200 kg/m ² T.S 498. |

Seismic zone

Effective ground
Building importance
Live load coefficient n:0,3
DESIGN-STATIC :
11372, Regulations about
zone(06.03.2006).
Insulation: TS 825 , Heat

RELEVANT STANDARDS

Climate zone

Wall insulation is suitable
Roof insulation is suitable
Section of roof and walls
zone(optional)

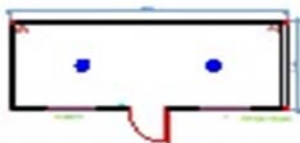
Technica Data Monobloc single Container

| | |
|---|--------------------------------|
| Snow Load | 80 kg/m ² |
| Wind Speed | 102 km/saat |
| External Wall Heat Transmission Coefficient | K: 0,26 Kcal/m ² hC |
| Internal Wall Heat Transmission Coefficient | K: 0,26 Kcal/m ² hC |
| Roof Heat Transmission Coefficient | K: 0,68 Kcal/m ² hC |
| Floor Heat Transmission Coefficient | K: 3,85 Kcal/m ² hC |
| Base-Plate(chassis) Load Capacity | 200 kg/m ² T.S 498. |



240x600

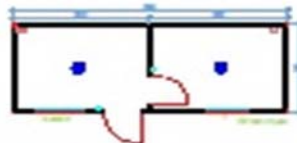
** Model of Unit is marked UNDER the drawing **



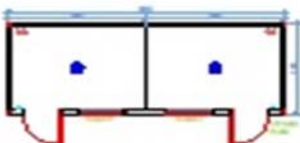
model 01



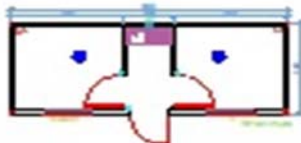
model 05



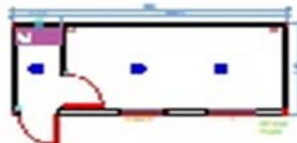
model 010



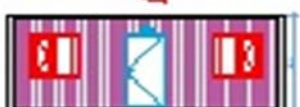
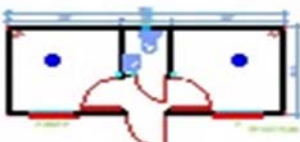
model 015



model 020



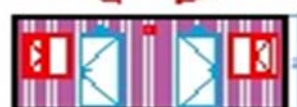
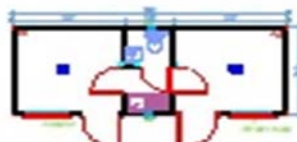
model 025



model 030



model 035



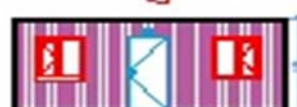
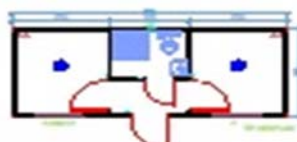
model 040



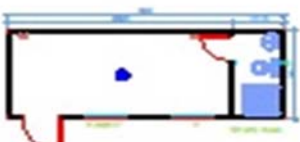
model 045



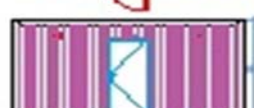
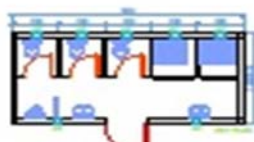
model 055



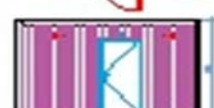
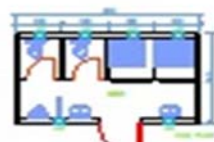
model 060



model 065



model 2,4X5-5T



model 2,4x4-4T

300x700



model 3x7-01



model 3x7-05



model 3x7-010



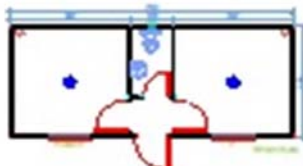
model 3x7-015



model 3x7-020



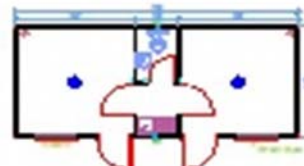
model 3x7-025



model 3x7-030



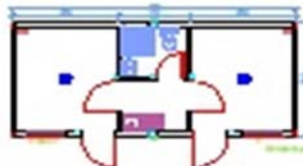
model 3x7-035



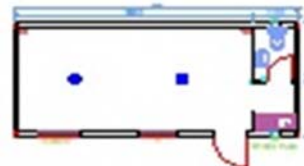
model 3x7-040



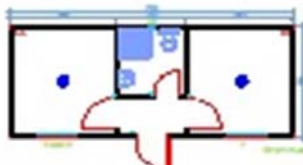
model 3x7-045



model 3x7-050



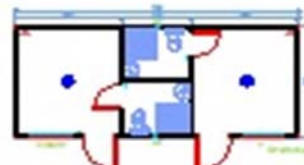
model 3x7-055



model 3x7-060



model 3x7-065



model 3x7-070

Our containers are products preferred due to low cost and fast production. High quality galvanized building steel is used in the film coated, painted, galvanized corrugated steel sheet is used in the exterior coating construction of our containers manufactured in Weldless Building Technology

Black steel sheet, DKP steel sheet and welding are not used in the production of our Standard containers. Galvanizing process is important and necessary in containers for noncorrosion of steel. For this reason, our containers never face corrosion problem. Besides, containers are resistant to all kinds of climate conditions and compatible to long term use. Weldings in joint places, which we witness in the applications of many companies, cause corrosion in containers.

Bolts and nuts system is used and welding is definitely not used in the joints of our container productions. Constructions composed of weldless joints is more stronger in containers,

Superior natural cement boards (fiber cement), produced by advanced technology, incombustible, unaffected by climate conditions and water and do not contain asbestos are used in the floor coatings of containers

The motives to prefer the containers we produce for our customers are resistance to earthquake, fast production, high quality, easy to consign, long-lasting, affordable and with no corrosion risk. We have 1500 units/month production capacity for the containers manufactured in our StructureRobot line

We share our distinctions and superior features from production to mounting with our professional customers and end-customers and continue our container production and quality services with our superior production technologies without ever slowing down

CONTAINER GENERAL UTILIZATION AREAS

Modular System Container: Modular system container can be used as single and two-storey. These types of containers can be used as office and bureau, prefabricated sites, dining halls and dormitories, prefabricated military installations, WC-shower and warehouse. Modular system containers are also designed for special purposes

Container WC-Shower groups: They are very sturdy due to strong steel construction Compatible to transportation and frequent changing of locations. Water and electrical installation shall be prepared by us. Water pipes are easily connected to city water and sewage as they are located at the back of the container and not underneath. It meets the requirements in large worksites, crowded organizations, construction areas as plenty of WC and shower units can be placed inside.

All our WC-Shower units have mirror, sink, squatting or flushing WC, toilet-paper holder, cabinet, toilet seat cover, soap dispenser and exhaust fan, automatic fuse, switch plug, cable installation and lighting fixture. Special solutions are offered for disabled citizens.

Panel System Container: EPS panel containers with high insulation value are preferred in regions with severe climate conditions. Panel system containers can be used in single and multi-storey such as modular system containers and can be produced mounted or demounted. It can be compatible to required climate regions with various panel thickness options

Utilization areas of panel system containers are Office and bureau, dormitory and dining hall, prefabricated worksites, prefabricated military installations, WC-shower and warehouse in general.

Mobile Container: Mobile container is generally preferred by companies which change sites frequently due to its mobility. Wheeled Mobile containers do not have installation and mounting procedures, saves time as its mobile.

Demounted Container: Demounted container occupies less space during transportation as it is demountable, thus provides ease of handling. Demounted containers can be preferred as an option just like mobile system containers.

Major Container Types can be put in order as; Modular System Container, Panel System Container, Demounted Container, WC Container, Shower Container, Office Container, WC-Shower Container, Security Container, Mobile Container, Camp Container.

Pricing Office and Construction Units - Office Containers

| Artikelnr. | Omschrijving | Verp H | Basisprijs exl.vat /btw | Munt |
|------------|--------------|--------|----------------------------|------|
|------------|--------------|--------|----------------------------|------|

642000 BUREEL/HOUSE UNITS 2.4 X 6

| | | | | |
|-------------|------------------------------------|---|----------|-----|
| 500.026.000 | BUREEL UNIT 2.4X6 TYP 01 - FREE | 1 | 3590.000 | EUR |
| 500.026.005 | BUREEL UNIT 2.4X6 TYP 05 - FREE XX | 1 | 3490.000 | EUR |
| 500.026.010 | BUREEL UNIT 2.4X6 TYP 010 | 1 | 3890.000 | EUR |
| 500.026.015 | BUREEL UNIT 2.4X6 TYP 015 XX | 1 | 3940.000 | EUR |
| 500.026.020 | BUREEL UNIT 2.4X6 TYP 020 | 1 | 4420.000 | EUR |
| 500.026.025 | BUREEL UNIT 2.4X6 TYP 025 | 1 | 4180.000 | EUR |
| 500.026.030 | BUREEL UNIT 2.4X6 TYP 030 | 1 | 4754.000 | EUR |
| 500.026.035 | BUREEL UNIT 2.4X6 TYP 035 | 1 | 4467.000 | EUR |
| 500.026.040 | BUREEL UNIT 2.4X6 TYP 040 | 1 | 4990.000 | EUR |
| 500.026.045 | BUREEL UNIT 2.4X6 TYP 045 | 1 | 4790.000 | EUR |
| 500.026.055 | BUREEL UNIT 2.4X6 TYP 055 | 1 | 4890.000 | EUR |
| 500.026.060 | BUREEL UNIT 2.4X6 TYP 060 | 1 | 5327.000 | EUR |
| 500.026.065 | BUREEL UNIT 2.4X6 TYP 065 | 1 | 4490.000 | EUR |

642005 BUREEL/HOUSING UNITS 3.0X7.0

| | | | | |
|-------------|------------------------------------|---|----------|-----|
| 500.037.000 | BUREEL UNIT 3.0X7 TYP 01 - FREE | 1 | 4450.000 | EUR |
| 500.037.005 | BUREEL UNIT 3.0X7 TYP 05 - FREE XX | 1 | 4450.000 | EUR |
| 500.037.010 | BUREEL UNIT 3.0X7 TYP 010 | 1 | 4790.000 | EUR |
| 500.037.015 | BUREEL UNIT 3.0X7 TYP 015 | 1 | 4790.000 | EUR |
| 500.037.020 | BUREEL UNIT 3.0X7 TYP 020 | 1 | 5450.000 | EUR |
| 500.037.025 | BUREEL UNIT 3.0X7 TYP 025 | 1 | 5120.000 | EUR |
| 500.037.030 | BUREEL UNIT 3.0X7 TYP 030 | 1 | 5740.000 | EUR |
| 500.037.035 | BUREEL UNIT 3.0X7 TYP 035 | 1 | 5390.000 | EUR |
| 500.037.040 | BUREEL UNIT 3.0X7 TYP 040 | 1 | 6190.000 | EUR |
| 500.037.045 | BUREEL UNIT 3.0X7 TYP 045 | 1 | 5990.000 | EUR |
| 500.037.050 | BUREEL UNIT 3.0X7 TYP 050 XX | 1 | 6550.000 | EUR |
| 500.037.055 | BUREEL UNIT 3.0X7 TYP 055 | 1 | 5450.000 | EUR |
| 500.037.060 | BUREEL UNIT 3.0X7 TYP 060 | 1 | 6120.000 | EUR |
| 500.037.065 | BUREEL UNIT 3.0X7 TYP 065 | 1 | 5450.000 | EUR |
| 500.037.070 | BUREEL UNIT 3.0X7 TYP 070 | 1 | 6990.000 | EUR |

642007 BUREEL/KLEINE UNITS

| | | | | |
|-------------|-----------------------------------|---|--------|-----|
| 500.122.003 | BUREEL UNIT 2.4X2.4 TYP 03 - FREE | 1 | 2690,- | EUR |
| 500.123.004 | BUREEL UNIT 2.4X3.0 TYP 04 - FREE | 1 | 2890,- | EUR |
| 500.124.005 | BUREEL UNIT 2.4X4.0 TYP 05 - FREE | 1 | 3190,- | EUR |

642008 TOILETS-KLEINE CONTAINERS-DOUCHES-

| | | | | |
|-------------|-----------------------------|---|--------|-----|
| 500.224.003 | TOILET UNIT 2.4X4.0 2T+2D+3 | 1 | 5750,- | EUR |
| 500.225.003 | TOILET UNIT 2.4X5.0 3T+2D+3 | 1 | 6690,- | EUR |

Remark : all prices are for Flat Pack, unmounted containers

ex :wachtebeke

If assembled add following

| | | | |
|---|--|-----|-----|
| 0 | Standard 2,4x6 - 3x7 container (4 x 2 man working hours) | 300 | EUR |
| 0 | each toilet or installed extra installation (2 hours) | 50 | EUR |
| 0 | Delevery Flatpack Belgium (Ex Zelzate up to 8 units/1truck) | 180 | EUR |
| 0 | Delevery Flatpack Holland (Ex Zelzate up to 8 units/1 truck) | 220 | EUR |
| 0 | Delevery Assembled (ex zelzate / 1 unit) (2 : 2,4x6) | 180 | EUR |
| 0 | Delevery Assembled (ex zelzate /1 unit) (2 : 2,4x6)Holland | 220 | EUR |

All prices are without VAT 21%

Payment : Cash at delevary

Warranty : 2 Years on construction faults

